



Power BI

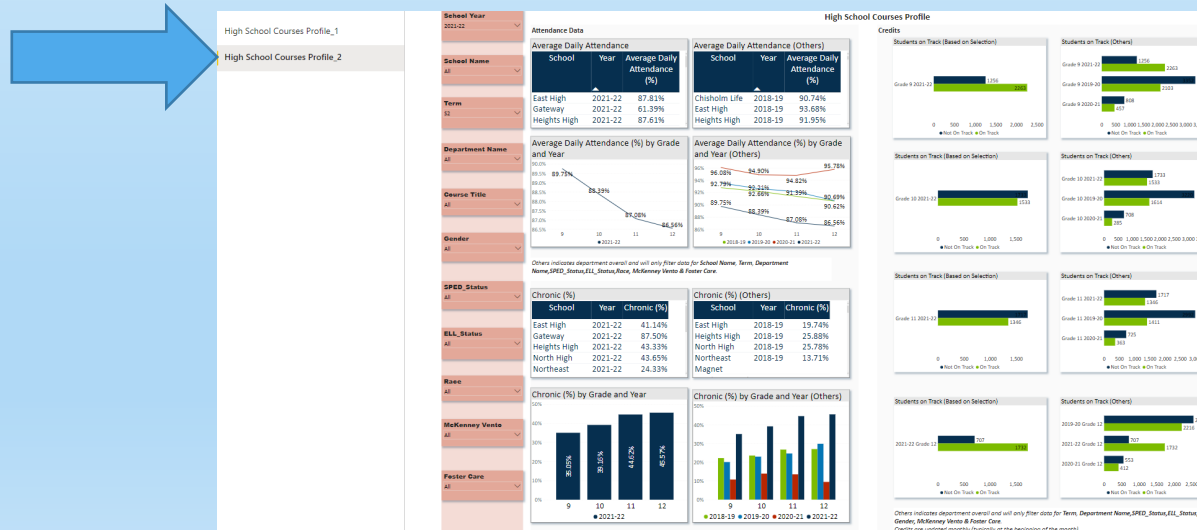
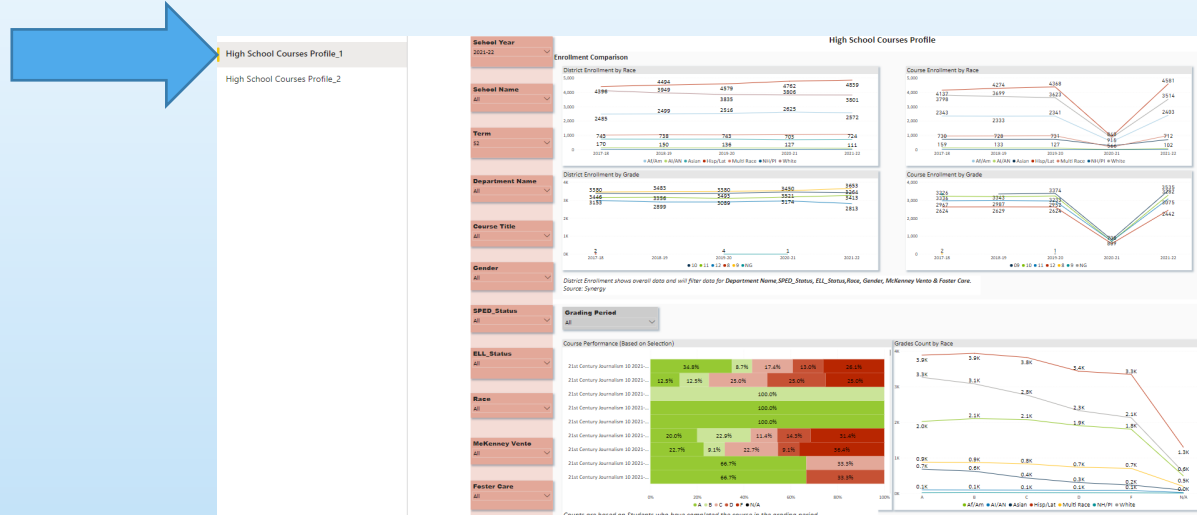
High School Courses Profile

Path: Comparative Reports > High
School Courses Profile



Overview High School Courses Profile Page 1

The High School Course Profile consists of two pages. To navigate between both pages users will select High School Courses Profile 1 or 2 from the left navigational window.

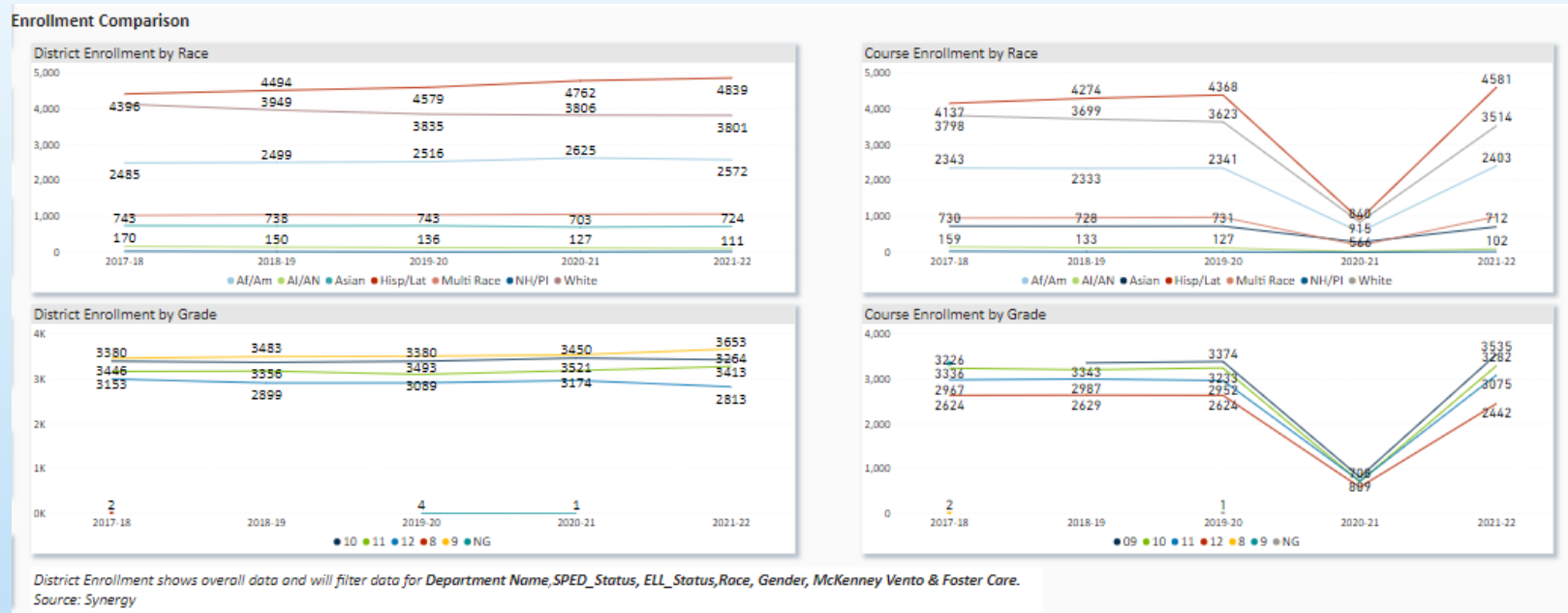


High School Courses Profile Page 1



The High School Course Profile Page 1: The top portion of this page shows District Enrollment Comparisons by race and grade as well as course enrollment by race and grade. The lower portion of this page also shows course performance based on selection and grades count by race. The filters along the left side of the screen will allow users to narrow down their search to specific areas.

High School Courses Profile Page 1

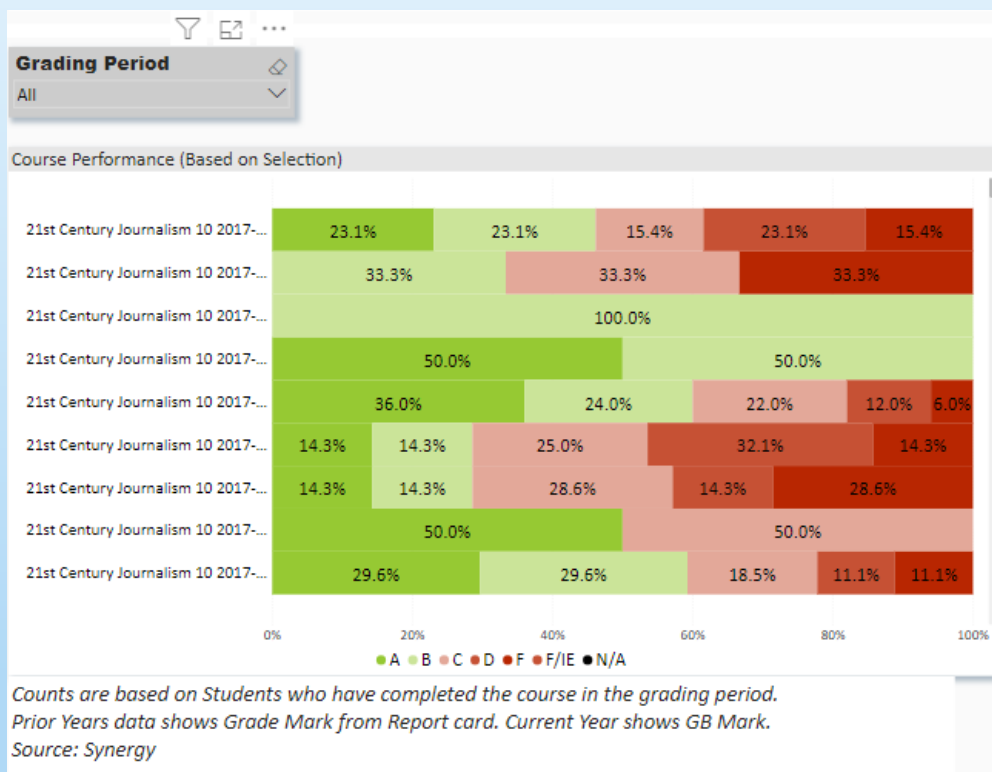


The top portion of page 1 shows District Enrollment Comparisons by race and grade and course enrollment by race and grade is specific upon the department and course selected. The different colors of lines on each dashboard relate to the key at the bottom of each dashboard. Hovering over the data for each year will display a larger window with the same information by year.

Filters: District Enrollment shows overall data. This data will filter by Department Name, SPED, ELL_Status, Race, Grade, McKenny Vento & Foster Care. The School Year filter does not apply to any of the District Enrollment Comparison dashboards. The School Name filter will only filter the data on the Course Enrollment by race and grade dashboards.

Note: When filtering for Course Title, it is best if users select a Department name to narrow down the filter options within Course Title.

High School Courses Profile Page 1



The lower left portion of page 1 shows Course Performance (Based on Selection.) The different courses in this data set are on the left side and are broken down by gender and race. Hovering over a course on the left will display the gender and race for that course selection. Scrolling down with your mouse will display additional courses. Users can use the course filter along the left side to select specific courses, gender or race. The School year filter will allow users to narrow down their search to a specific year. The different colors on the Course Performance dashboard show the percentage of students within each gender/race who received a particular letter grade for each course. The color shading corresponds to the key at the bottom of the data set. Hovering over the percentage data for each course will display a larger window with the same information.

The filter above Course Performance, labeled Grading Period will allow users to narrow down the data by quarter. To view by semester, users will need to select the two quarters within the semester.

Note: Counts are based on Students who have completed the course in the grading period. Prior Years data shows Grade Mark from Report Card. Current Year shows GB Mark.

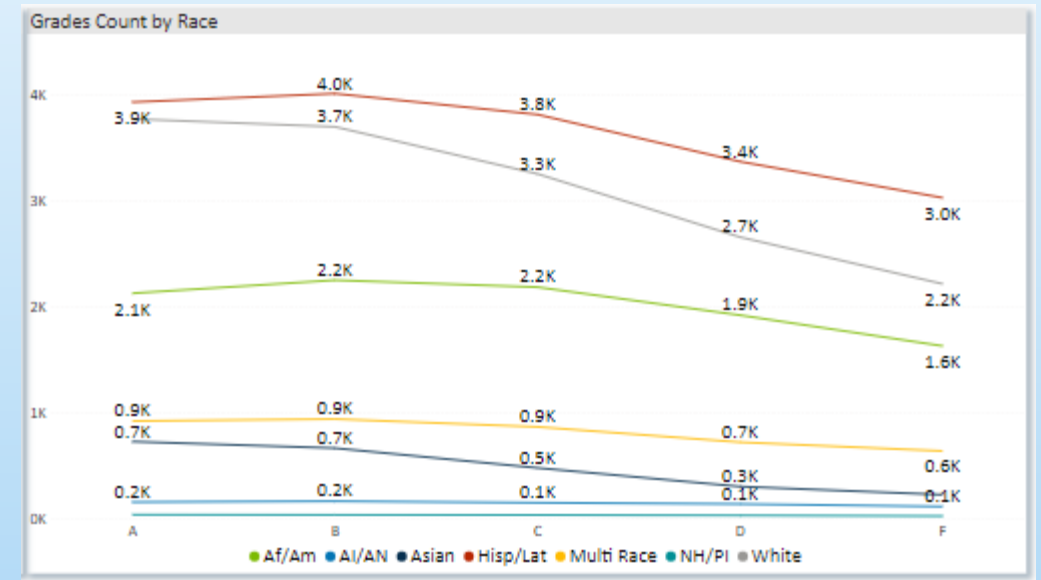
High School Courses Profile Page 1

The lower right portion of page 1 displays Grade Count by Race.

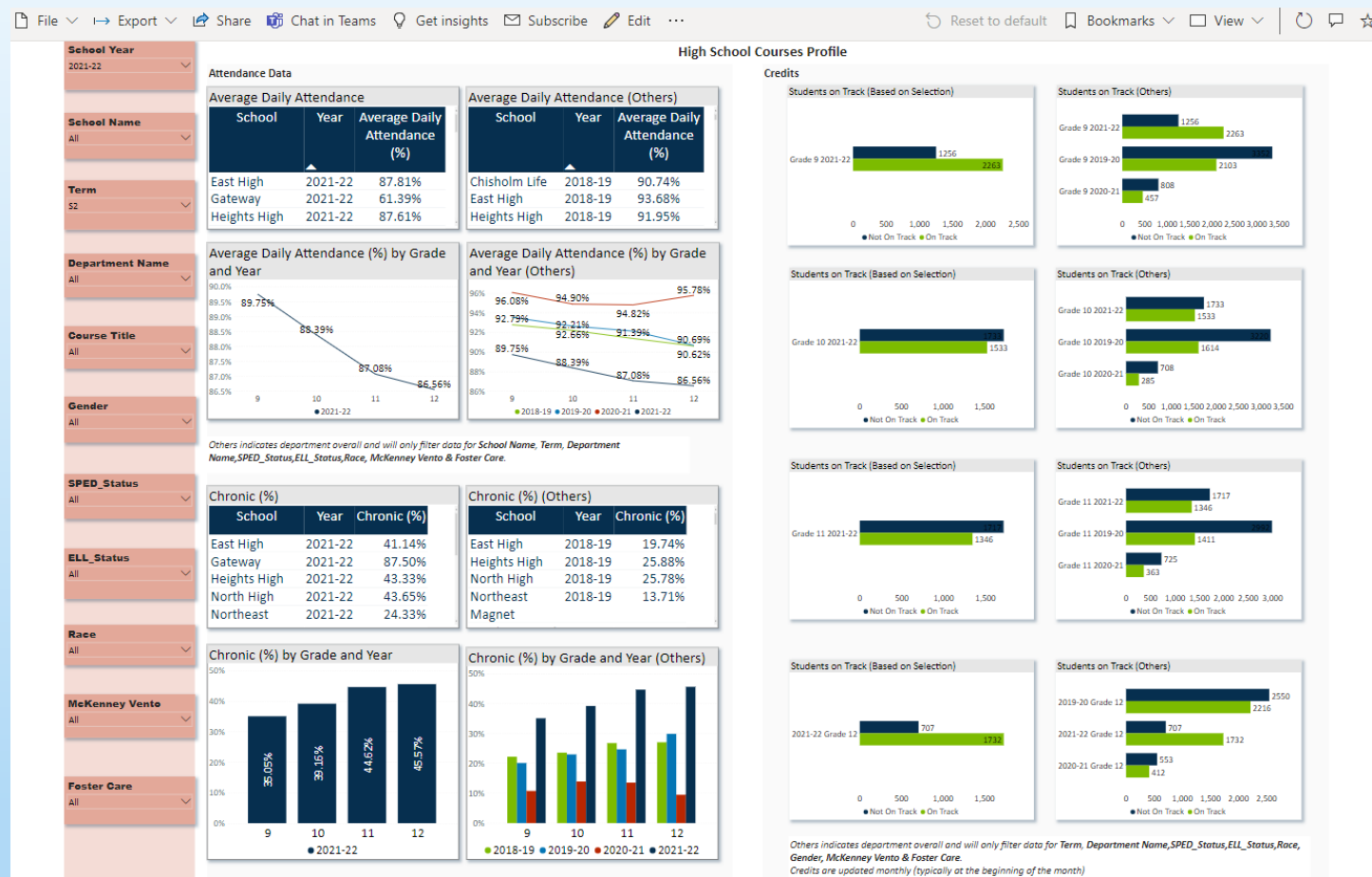
The different line colors on each dashboard correspond with the key at the bottom of the dashboard. Hovering over the data for each grade will display a window that shows the exact number of students by race for each letter grade.

The filter above Course Performance, labeled Grading Period will allow users to narrow down the data by quarter. To view by semester, users will need to select the two quarters within the semester.

Note: Counts are based on Students who have completed the course in the grading period. Prior Years data shows Grade Mark from Report Card. Current Year shows GB Mark.

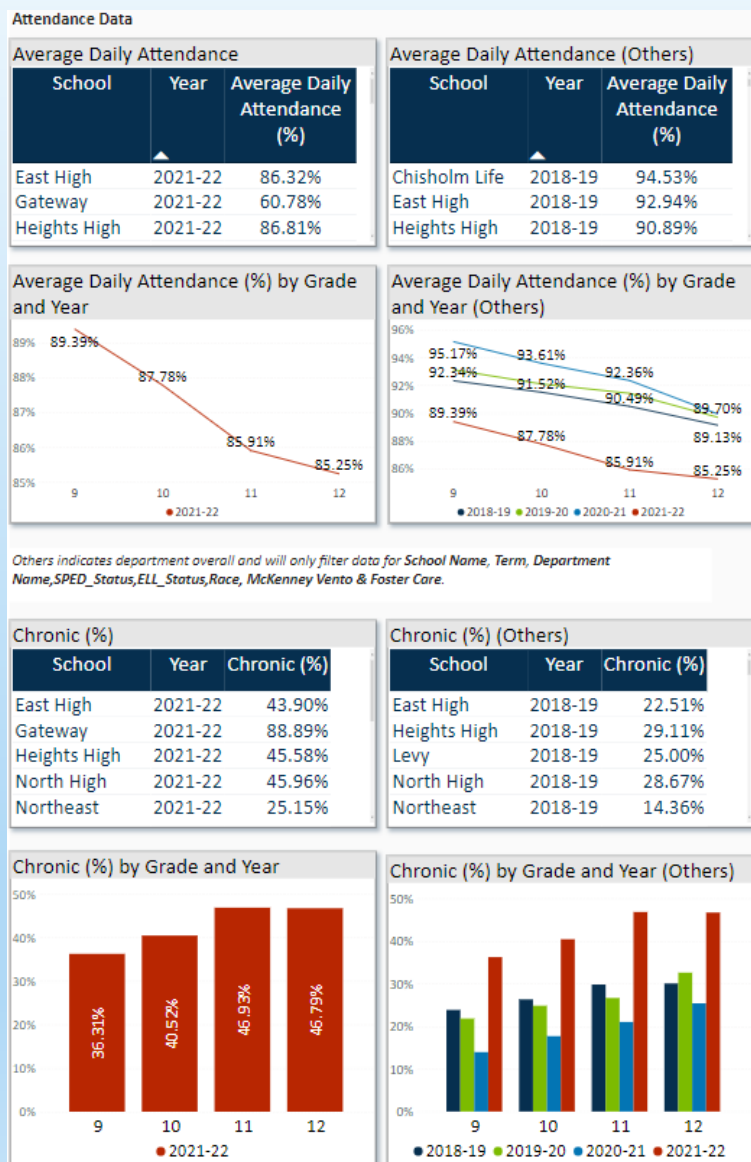


High School Courses Profile Page 2



The High School Course Profile Page 2: This dashboard shows Attendance Data and Credits Data. The filters along the left side of the screen will allow users to narrow down their search to specific areas.

High School Courses Profile Page 2



The left side of page 2 displays Attendance Data. This data is broken down by Average Daily Attendance, Average Daily Attendance (Others), Chronic (%) and Chronic (%) (Others), Chronic (%) by Grade and Year and Chronic (%) by Grade and Year (Others).

Filters on the left of the page will allow users to narrow down their search to a specific school year, term, department name, Gender, SPED_ELL Status, Race, McKenny Vento & Foster Care.

Note: Others indicates department overall and will only filter data for Term, Department Name, SPED_Status, ELL_Status, Race, Gender, McKenny Vento & Foster Care.

High School Courses Profile Page 2

The right side of page 2 displays Credits and shows the number of students by grade that are on Track. The blue shade shows the students who are Not On Track. The green shade shows the number of Students who are on track. Each grade level is broken down by Students on Track (Based on Selection) and Students on Track (Others.) Hovering over each shaded area will give users an addition window that reflects the data for that grade and school year.

Filters on the left of the page will allow users to narrow down their search to a specific school year, term, department name, Gender, SPED_ELL Status, Race, McKenny Vento & Foster Care.

Note: Others indicates department overall and will only filter data for Term, Department Name, SPED_Status, ELL_Status, Race, Gender, McKenny Vento & Foster Care.

